



DATA SHEET

SECUREWATCH™

See a better world.®

DigitalGlobe

## SecureWatch™

SecureWatch is the premier cloud-based subscription service for rapid access geospatial intelligence (GEOINT). Optimized to deliver mission-critical data, subscribers can quickly access over 3 million square kilometers of daily image collections, plus more than 6 billion square kilometers of archived imagery at up to 30 cm resolution.

DigitalGlobe satellite imagery is available to view or download in SecureWatch within 48 hours of collection, so you can monitor and communicate relevant activity in any location around the globe.

Our SecureWatch web browser interface enables imagery access and exploitation via desktop or mobile device - change analysis, annotation, measurements, etc. And you gain additional insights through integrated resources such as the tactical news feed, Human Landscape layers, and elevation data.

### SecureWatch provides indispensable GEOINT for a wide variety of use cases:

- Mapping
- Mission planning and rehearsal
- Change detection
- Border monitoring
- Order-of-battle assessment
- Pattern-of-life analysis
- Maritime domain awareness
- Damage assessment
- Humanitarian and disaster response

#### RADARSAT-2 AND NATURAL COLOR COMPARISON



RADARSAT-2 and WorldView-2 images | Lima, Peru

#### RECENT IMAGERY COLLECTIONS



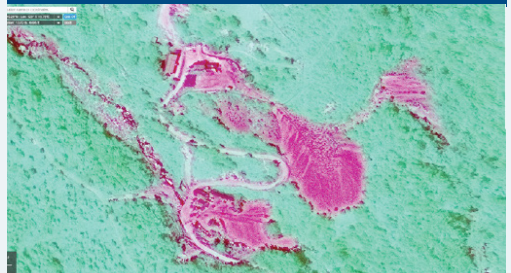
Six months of new imagery collections shown as orange areas

#### INTELLIGENCE-GRADE RESOLUTION



30 cm image | Sohae, North Korea

#### MULTISPECTRAL IMAGERY COVERAGE

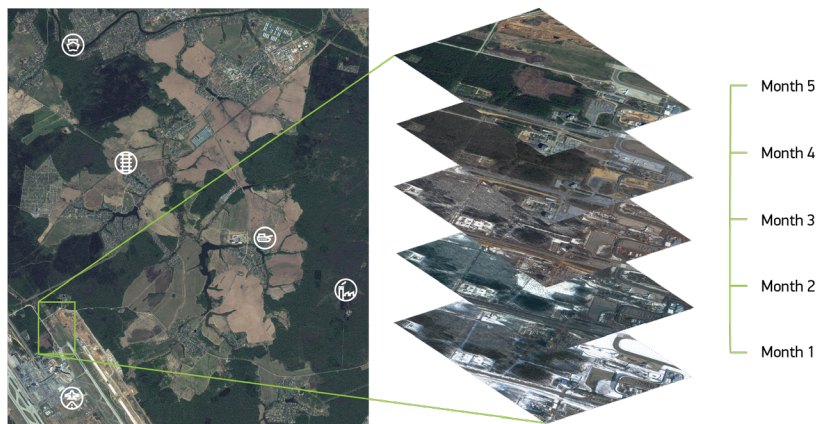


8 spectral band image shown in false color. Red areas indicate disturbed earth from excavation activity.

Punggye-ri Nuclear Test Site, North Korea

## SecureWatch Sites

- SecureWatch Sites is a premium option that delivers reliable imagery refresh for monitoring facilities, border crossings, etc.
- New images are delivered on a routine basis and integrate seamlessly with standard imagery and archive.



## Specifications

Coverage options	Global
Electro-optical	WorldView-4, 3, 2, 1, GeoEye-1, QuickBird, and enriched third-party sensor data
Cloud cover	<ul style="list-style-type: none"><li>- Full-resolution viewing and rapid download imagery (Daily Take) at 35% or less cloud cover</li><li>- Additional imagery available through on-demand archive retrieval</li></ul>
Resolution	30-100 cm GSD pan sharpened at nadir, 2 m over Israel
Image bands	<ul style="list-style-type: none"><li>- Full-resolution viewing and rapid download imagery is panchromatic (WorldView-1) and 3-band pan sharpened natural color (all other sensors)</li><li>- 8-band VNIR and SWIR multispectral products</li></ul>
Stereo Imagery	- Full access to DigitalGlobe stereo archive. Image pairs are delivered as System-ready (level 1B) with full metadata)
Imagery product type	<ul style="list-style-type: none"><li>- Full-resolution viewing and rapid download of map-ready (level 3 orthorectified) imagery</li><li>- System-ready (1B) and Ortho-ready (OR2A) available via on-demand archive request</li></ul>
Accuracy, on global basis	<10m CEgo (Ortho-rectified products)
Digital elevation model	SRTM 2 (30 m) where available
Projection/datum	UTM/WGS84
Off-nadir angle	<ul style="list-style-type: none"><li>- Full-resolution viewing and rapid download imagery (Daily Take) at 0-30 degrees off nadir</li><li>- Imagery with higher off-nadir angles available through on-demand archive retrieval</li></ul>
Availability	DigitalGlobe imagery is available within 48 hours of collection
Synthetic Aperture RADAR (SAR)	MDA RADARSAT-2 Wide Ultra-Fine (3m resolution) over select geographies

## Deliverable

Access to SecureWatch via:

- Web browser interface
- OGC streaming services
- Google Earth plug-in
- Esri ArcGIS

## Subscriptions

Base subscription includes:

- Access to the complete DigitalGlobe image library
- Five global base layers of Human Landscape
- Available at multiple pricing levels based on data consumption

Premium subscription options:

- SecureWatch Sites - Delivers persistent imagery refresh over key defense sites
- Human Landscape - Delivers 60+ layers of human geography data on a country by country basis

## Security

- Active prevention of SQL-Injection, cross-site scripting, DoS and DDoS attacks
- Web Application Firewall that performs deep inspection of all web traffic
- HTTPS encryption of all communication between client and server
- Multi-tiered firewall approach to ensure customer data protection
- SFTP, Aspera, and AWS S3 secure downloads are supported

## Contact us for an evaluation account

International Defense & Intelligence Programs  
InternationalDefense@digitalglobe.com

DS-SECUREWATCH 10/2018